



Order of Worship

Welcome

Prelude Barbara Goodell

Call to Worship &
Advent Candle
Lighting

Hymn O Come, O Come
Emmanuel
UMH #211

Affirmation of Faith The Apostles' Creed
UMH #881

Gloria Patri

Prayers of the People

Confession &
Assurance

Hymn Light of the World

Children's Message Amy Dutcher

Scripture Isaiah 9:2-7
John 1:1-18

Sermon Rev. Steven Newcomb

Great Thanksgiving

Lord's Prayer

Holy Communion

Hymn Go Tell It On The
Mountain
UMH #251

Gifts, Tithes, &
Offerings

Benediction

Postlude Barbara Goodell

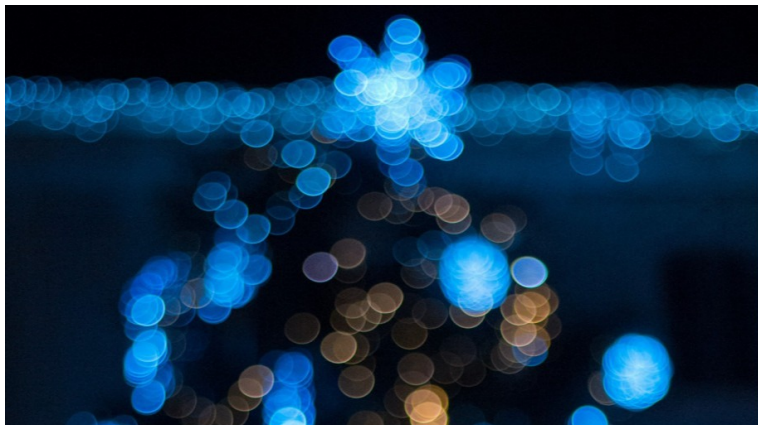


CPS Giving Tree

Help send Christmas Gifts to foster children from our area by donating to the CPS gift fund through the Methodist Women. You can donate in the narthex on Sunday morning or donate through any of our regular donation methods by designating your gift as a CPS Donation. An ornament will be placed on the trees in the narthex for each donation made. Let's fill up our trees with ornaments to help fill the lives of foster children with extra joy this year.

Open Sanctuary Times

If you haven't been able to come to worship and spend time in the Sanctuary these past several months, we would like to give you the opportunity to come and be present in the decorated worship space. The sanctuary will be open December 22 & 23 from 4:30 PM to 6:30 PM. The lights will be on. The candles will be lit. Christmas Music will be playing. Take advantage of this opportunity to spend some time alone or with your family in the sanctuary at FUMC.



Blue Christmas/Longest Night Servie

Sanctuary @ December 21st 6:30pm

Join us for this service recognizing that even in the Joy of Christmas, we experience grief and sorrow.



Christmas Eve Family Worship

Sanctuary @ December 24th 4:30pm

Come for a short but exciting service celebrating Christmas with all members of the family. This service is appropriate for all ages.



Christmas Eve Candlelight Communion Service

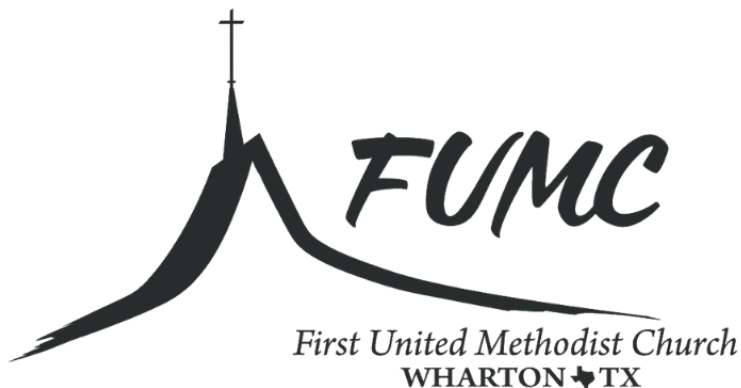
Sanctuary @ December 24th 6:00pm

Our annual candlelight communion service is something you will not want to miss. Bring the family to celebrate the start of Christmas together.

First United Methodist Church

1717 Pioneer Ave, Wharton, TX 77488

PHONE: 979-532-1100 **EMAIL:** whartonfumc@whartonfumc.org



December 20th, 2020

*I Believe in the Light:
Illuminating Peace*

Fourth Sunday in Advent
I Believe, Even When ... Worship Series

Our 4-Part Vision

Building Community

Growing Our Faith

Feeding the Hungry

Engaging the Children

To all who sin and need a Savior ...

To all who mourn and seek comfort ...

To all who are lonely and need a friend ...

To all who are weary and need rest ...

To whosoever will come ...

This church opens wide her door and her heart ...

And in the name of Jesus Christ, bids you welcome.